

CREATE  
your STYLE™  
with CRYSTALLIZED™ – Swarovski Elements

# GOLDEN NIGHT EARRINGS



# GOLDEN NIGHT EARRINGS



## CRYSTALLIZED™ – Swarovski Elements

| Article  | Product Group | Article No. | Amount | Size  | Color                 | Color Code | Supplies                                    |
|--|---------------|-------------|--------|-------|-----------------------|------------|---|
|  | Sew-on Stone  | 3204        | 2      | 12 mm | Crystal Golden Shadow | 001 GSHA   | Seven hold spacer bar                       |
|  | Bead          | 5000        | 240    | 2 mm  | Crystal Golden Shadow | 001 GSHA   | 2 Ear wires, plain French hook, gold filled |
|  | Bead          | 5000        | 190    | 2 mm  | Crystal Moonlight     | 001 MOL    | 2 Split rings, 4.5 mm, gold filled          |
|  |               |             |        |       |                       |            | 14 Headpins, 3", 22 gauge, gold filled      |
|  |               |             |        |       |                       |            | Jewelry glue of your choice                 |

### STEP 1

- Begin by cutting off the heads of 14 headpins.
- Wire wrap a loop at the top of 2 separate pins.
- Insert each pin into center of each spacer bar, and begin adding Crystal Moonlight rounds to pin, gluing every 3 beads to secure in place.

### STEP 2

- 35 crystals in all, gluing end bead securely, and then cutting excess wire.

### STEP 3 + 4

- Add pins to either sides of center pin, gluing a Crystal Golden Shadow crystal to hold pin in place on the top of the spacer bar, and adding 32 crystals below spacer bar, gluing every 3 beads to secure in place.

### STEP 5

- Continue finishing off as the previous pins above.

### STEP 6

- Continue with pins on either side of previously finished pins, next using 29 (plus one additional on top) of Crystal Moonlight, and then with 26 (plus one additional on top) of Crystal Golden Shadow.

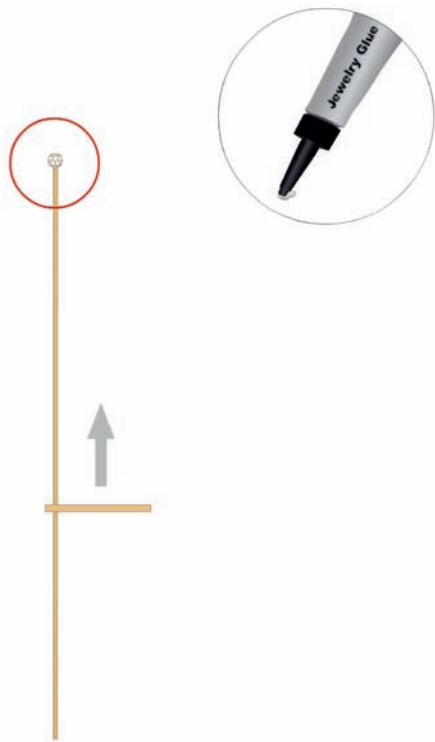
### STEP 7

- Let glue dry at least 24 hours before finishing off.

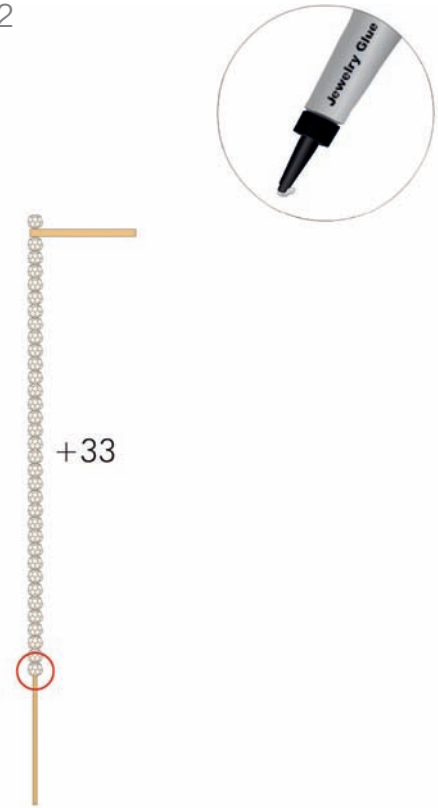
### STEP 8

- Once dry, attach Sew-on stone to your created eye pin loop with the split rings using chain nose pliers, and then add the French ear wire, to the top of the Sew-on stone with the pliers as well.

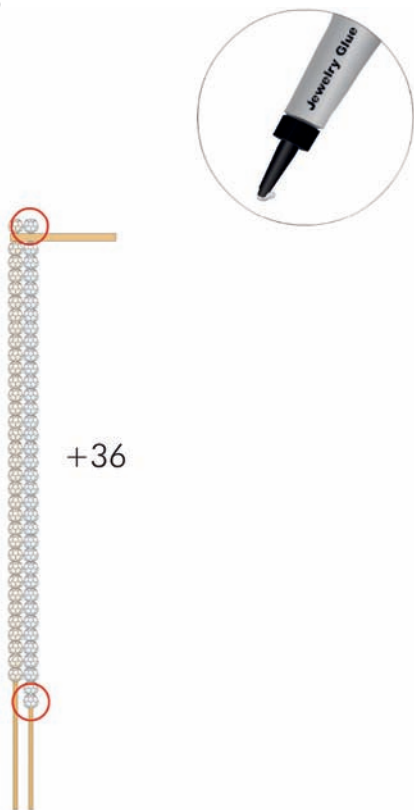
STEP 1



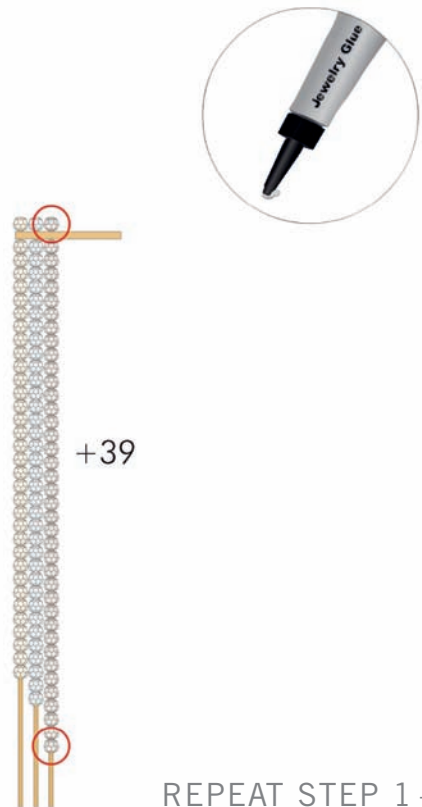
STEP 2



STEP 3

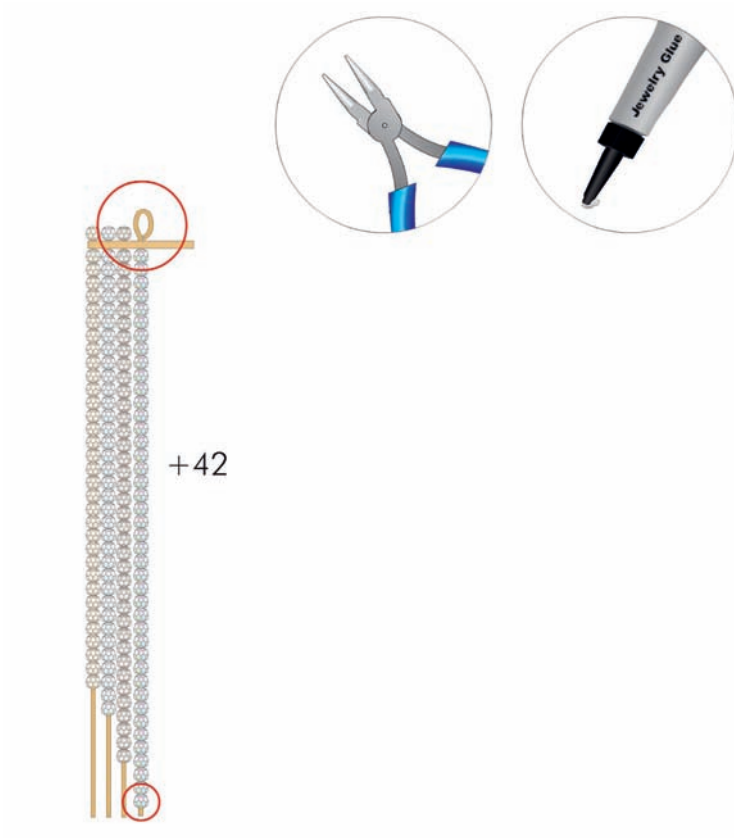


STEP 4

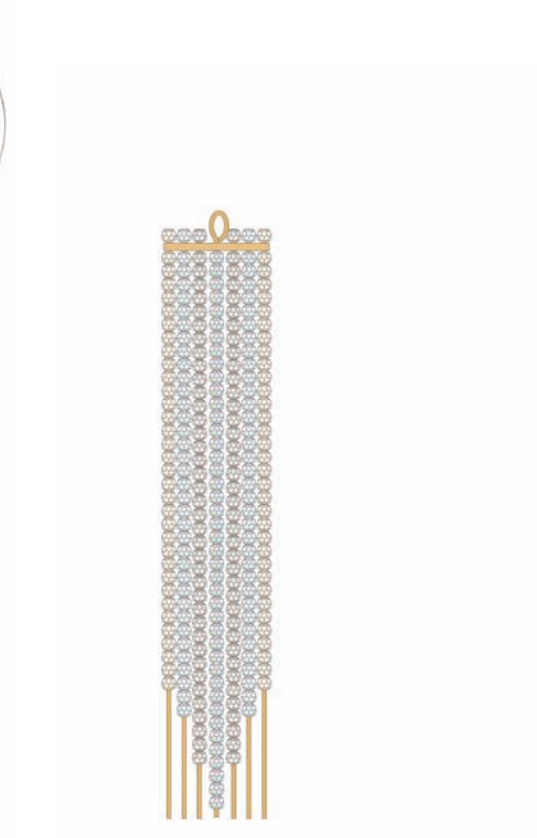


REPEAT STEP 1 – 4

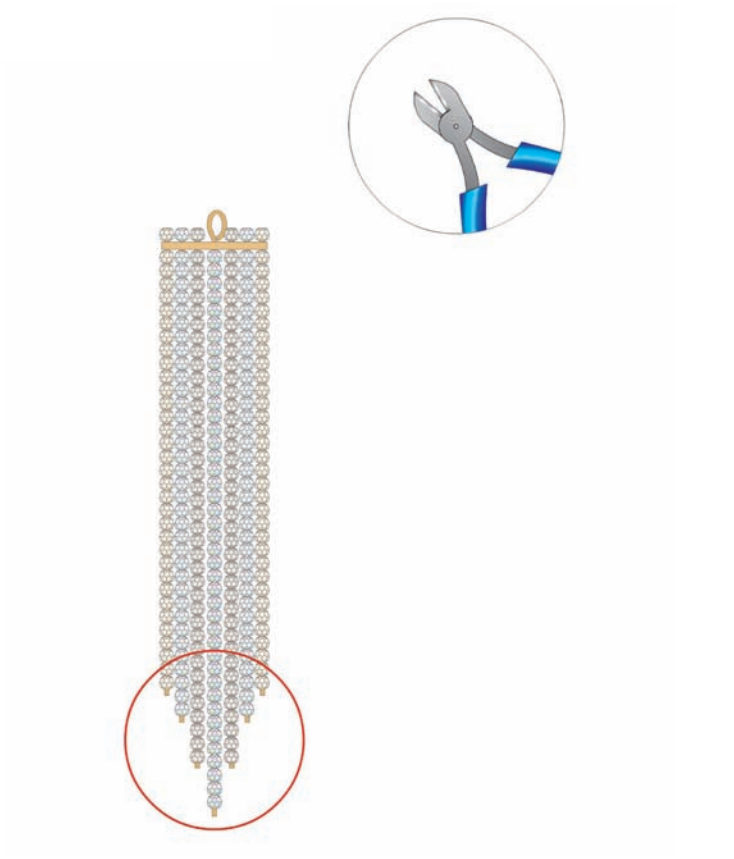
STEP 5



STEP 6



STEP 7



STEP 8

