

CREATE
your STYLE™
with CRYSTALLIZED™ – Swarovski Elements

NAUTIC NECKLACE



NAUTIC NECKLACE



CRYSTALLIZED™ – Swarovski Elements

Article	Product Group	Article No.	Amount	Size	Color	Color Code	Supplies	
	Beads	5301	215	4 mm	Crystal (CRY)	001	3 ft. 019 Nylon Coated Stringing Wire 2 – 2 x 2 mm Crimp Tubes 1 – 8 mm Soldered Jump Ring 1 – 14 x 5 mm Lobster Clasp with Ring 150 – 2” 24 gauge Headpins	
	Beads	5301	175	4 mm	Blue Zircon (BZ)	229		
	Beads	5301	135	4 mm	Light Sapphire (LSA)	211		
	Beads	5301	75	4 mm	Capri Blue (CAP)	243		
	Beads	5301	175	4 mm	Sapphire (SAP)	206		
	Beads	5000	6	16 mm	Crystal	001		Tools Wire Cutter Round Nose Pliers Crimping Tool
	Beads	5000	18	10 mm	Capri Blue	243		
	Beads	5000	11	8 mm	Aquamarine	202		

STEP 1

Thread 4mm beads on head pins using the following patterns and set aside.

A1	A2	B1	B2	B3	C1	C2	C3	D1	D2	D3
CRY	CRY	LSA	CRY	LSA	CRY	LSA	CRY	BZ	BZ	CRY
LSA	CRY	CRY	LSA	BZ	SAP	BZ	CRY	CRY	SAP	LSA
BZ	LSA	SAP	BZ	CRY	BZ	CRY	LSA			
SAP	SAP	CRY	SAP	SAP						
BZ	BZ	BZ	BZ	CAP						
SAP	CRY	CAP	SAP	SAP						
CRY	SAP									
CAP	CAP									
LSA	BZ									
TOTAL	TOTAL	TOTAL	TOTAL	TOTAL	TOTAL	TOTAL	TOTAL	TOTAL	TOTAL	TOTAL
11	11	20	20	20	11	11	11	11	11	11

STEP 2

Using a round nose pliers, turn a loop and trim excess headpin with wire cutters.

STEP 3

- Thread 1 – crimp tube on stringing wire, add jump ring, thread wire back thru crimp tube, leave a 2” tail, crimp using tool.
- Arrange beaded fringe by size, alternating different patterns of fringe and string 3-4 headpin fringes alternating with large 5000 beads in random pattern.

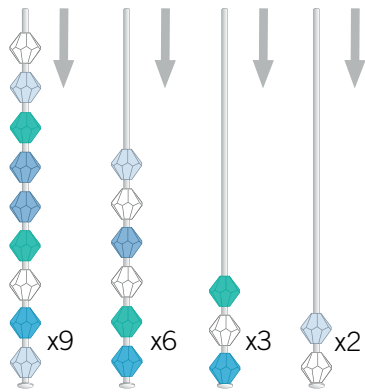
STEP 4

- Continue pattern as illustrated. Make sure tail of wire is secure under 2 large beads. Trim excess tail wire.
- End necklace with a large bead, add crimp tube, clasp, make sure all beads are snug and tail from jump ring side buried under 2 large beads.

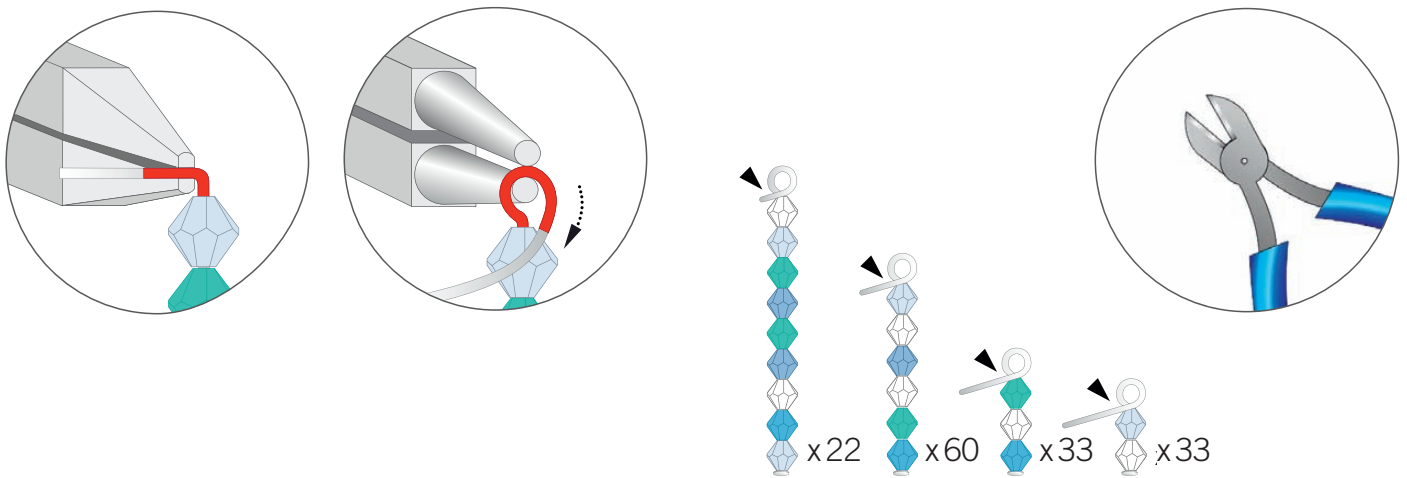
STEP 5

- Thread thru large beads and fringe, exiting under a large bead. Crimp and trim wire as shown.

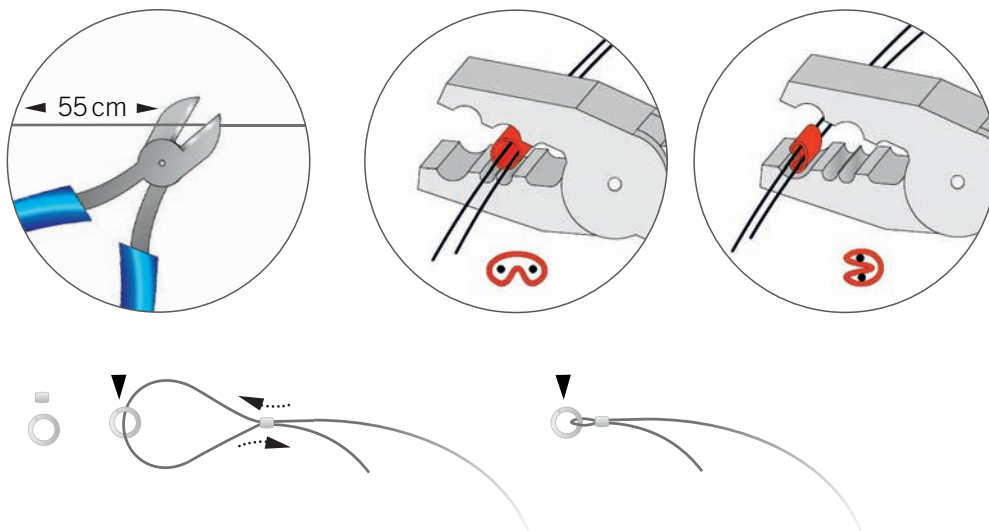
STEP 1



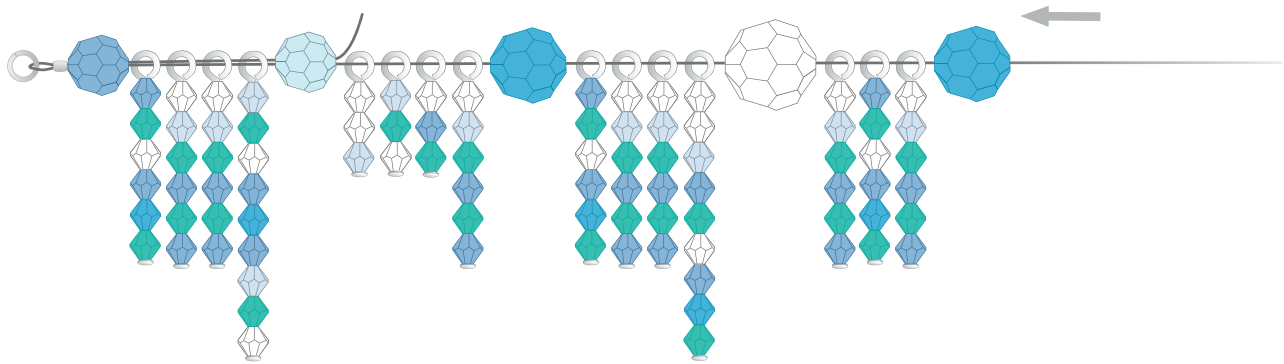
STEP 2



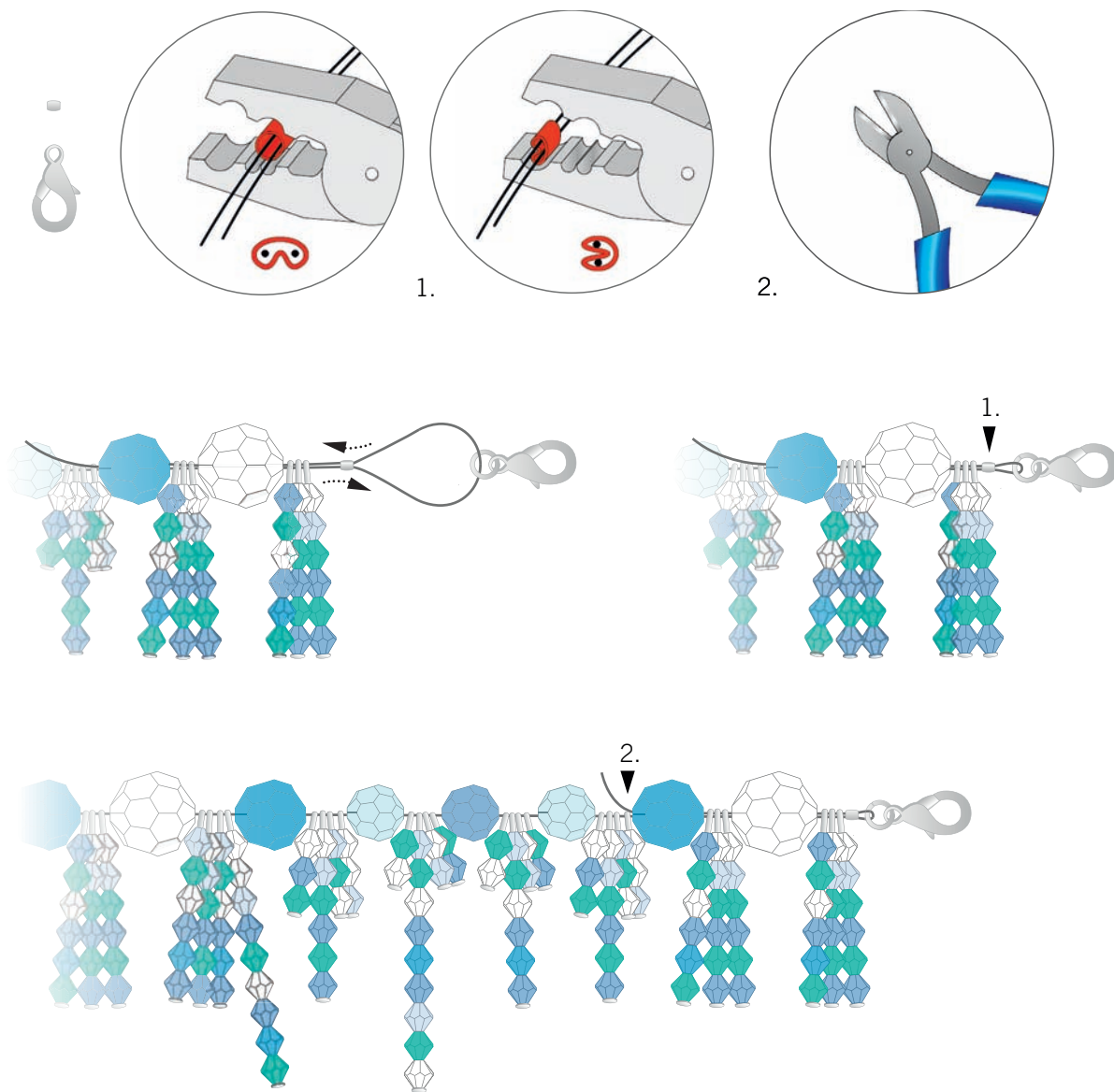
STEP 3



STEP 4



STEP 5



STEP 6

