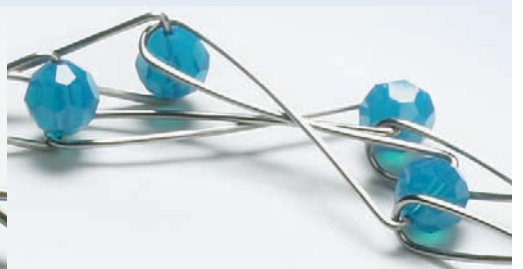


CREATE  
your STYLE™  
with CRYSTALLIZED™ – Swarovski Elements


# OCEAN DROP NECKLACE



# OCEAN DROP NECKLACE



## CRYSTALLIZED™ – Swarovski Elements

Article	Product Group	Article No.	Amount	Size	Color	Color Code	Supplies
	Beads	5000	40	8 mm	Caribbean Blue Opal	397	Wire, 18 gauge (1 mm), Sterling silver, 310"/25.9 ft.  OR Wire, 20 gauge (0.8 mm), Sterling silver, 310"/25.9 ft.
							<b>Tools</b>  Diagonal cutters  Round nose pliers  Chain nose pliers

### STEP 1

Prepare the wire components:

- Cut 40 lengths of sterling silver wire to 3.5" (90 mm).
- Bend the wire in half around the largest part of a round nose pliers to form a U-curve at one end. Keep the legs exactly the same height.
- Using a chainnose pliers, bend each tip outward to a right angle of 3/16" (5 mm). (Tip: For consistency, mark the inner jaw of the pliers with permanent marker at the point that measures 3/16" across. Use this position/mark to bend the same length of wire each time.)  
(Note: There will be slightly more wire than will fit into the hole on one side of the crystal. This creates a reservoir to seat the wire for the adjacent link.)

### STEP 2

Assemble the necklace:

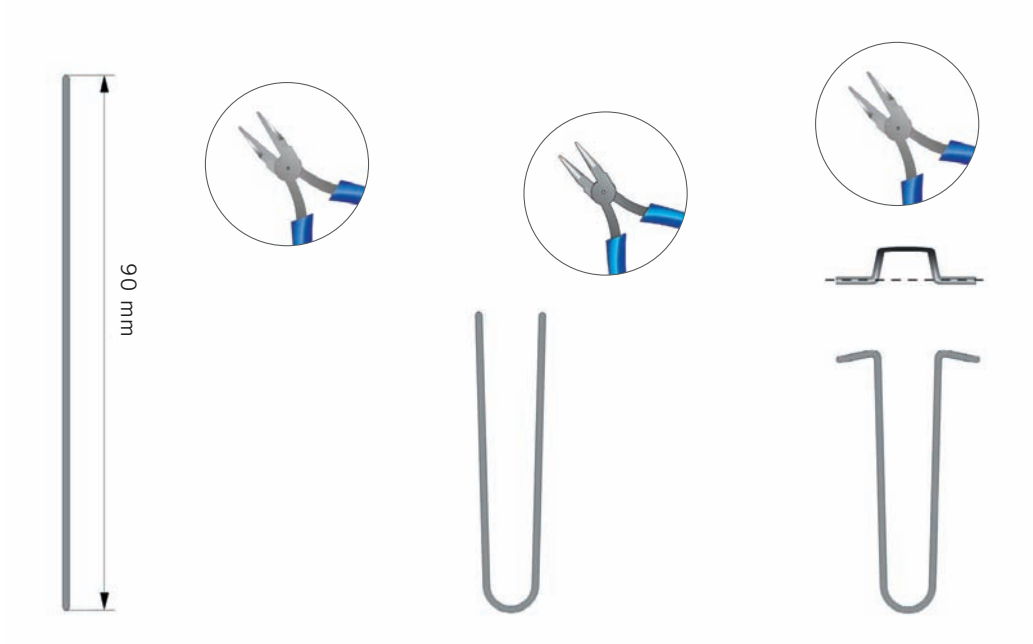
- Load a Art. 5000 crystal on one outward tip of a wire component.
- Cross one leg of the wire component over the other and insert the empty tip into the open hole of the same bead.
- Repeat the last step 38 more times adding in the last component to the bead-end of the current component before completing the link  
(Note: This will keep all the components same end up).

### STEP 3

Finish the necklace:

- Start the 40<sup>th</sup> link as before but add in the first link to create a continuous circle.

STEP 1



STEP 2

